

Tower Cam via Mesh

Written by Jim Kinter, K5KTF - Last Updated Monday, 16 January 2012 22:19

Installed one of my Trendnet TV IP110 webcams in a weatherproof box, then installed that inline with my 24dBi dish on a 50' push up pole.

Tower Cam via Mesh

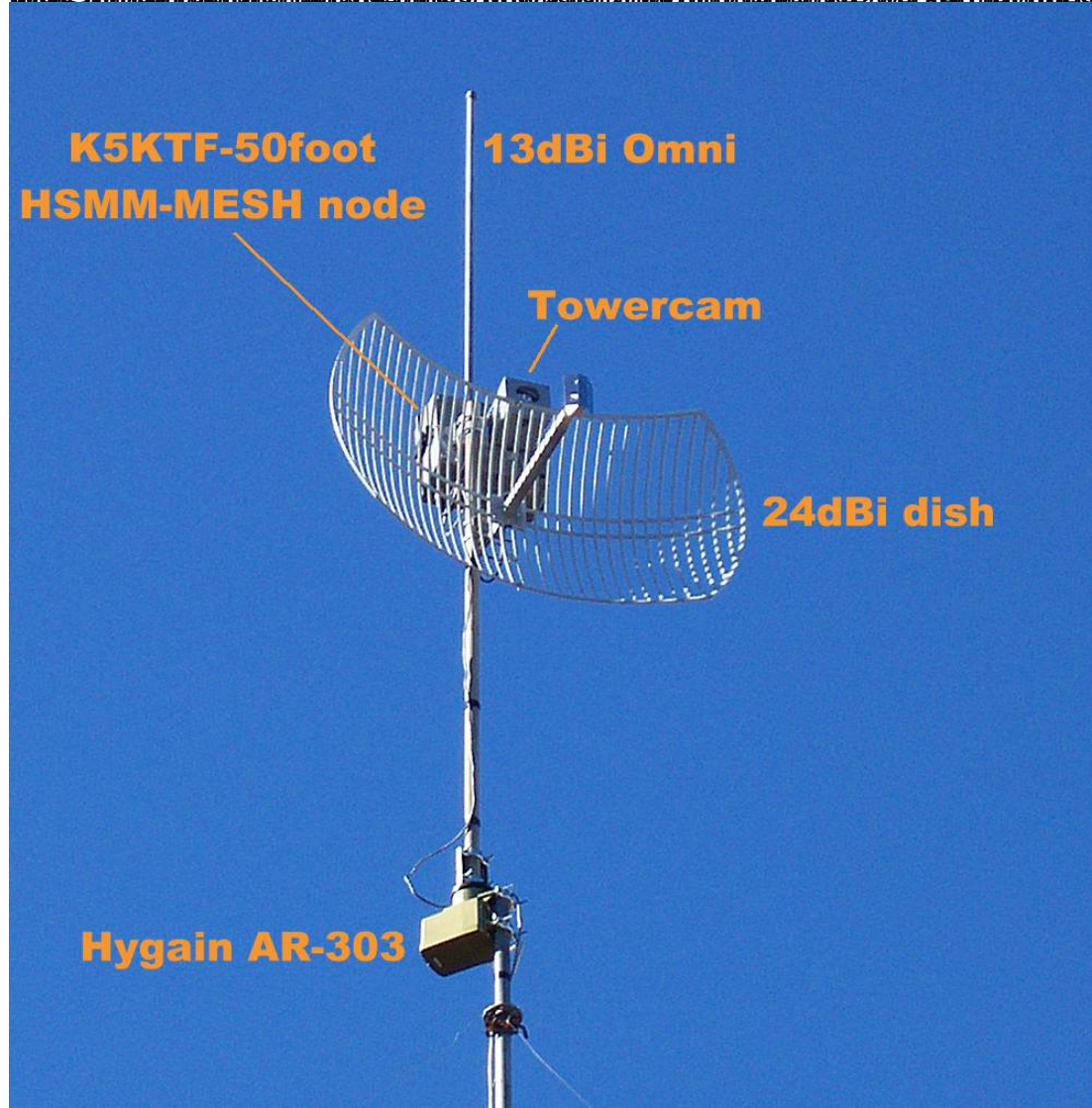
Written by Jim Kinter, K5KTF - Last Updated Monday, 16 January 2012 22:19



Tower Cam via Mesh

Written by Jim Kinter, K5KTF - Last Updated Monday, 16 January 2012 22:19

With the addition of the 24dBi dish antenna, the tower can be used for a variety of applications. The 24dBi dish antenna is a high gain antenna that provides a narrow beam of energy, making it ideal for long distance communication. The 13dBi Omni antenna is a low gain antenna that provides a wide coverage area, making it ideal for local communication. The Hygain AR-303 antenna is a high gain antenna that provides a narrow beam of energy, making it ideal for long distance communication. The Towercam is a camera that is mounted on the tower, providing a high angle view of the surrounding area. The K5KTF-50foot HSMM-MESH node is a mesh network node that provides a high speed, low latency connection to the internet.



And the 24dBi dish antenna is a high gain antenna that provides a narrow beam of energy, making it ideal for long distance communication. The 13dBi Omni antenna is a low gain antenna that provides a wide coverage area, making it ideal for local communication. The Hygain AR-303 antenna is a high gain antenna that provides a narrow beam of energy, making it ideal for long distance communication. The Towercam is a camera that is mounted on the tower, providing a high angle view of the surrounding area. The K5KTF-50foot HSMM-MESH node is a mesh network node that provides a high speed, low latency connection to the internet.